

ORTECH

BIURO PROJEKTÓW

87-800 Włocławek ul. Łęgska 5 tel 054 411 3665
tel/fax 054 411 6912 www.ortech.pl kontakt@ortech.pl

BASIC REFERENCES



ORTECH

The ORTECH Designing Agency has been on the market since 1988. We offer industrial design and engineering services both with regard to new investment as well as the modernisation of existing industrial plants, moreover the full scope of our services related to the running of the investment process.

Our previous experience includes:

1. The development of complete plans of industrial plants
2. The development of full-range plans of warehouses and logistics centres
3. The development of plant modernisation drawings to adjust existing plants to the requirements of EU directives considering HCCP and fire safety rules.
4. The development of plans of office buildings
5. The development of plans of commercial facilities
6. The development and organisation of the investment process -construction engineer performing core functions
7. The development of applications and motions, and, in the further course, the obtaining of decisions and licences related to the investment process
8. Implementation of technical opinions and analyses
9. Checks the technical condition of buildings and structures

In the past ten years, we have designed and performed works on several projects with high complexity levels and very strict quality requirements. Our designs were approved by international groups of companies and they met the requirements of both Polish and European Standards.

We take pride in having designed and erected numerous industrial facilities of varied functionalities from industrial plants, stores, warehouses to office buildings and technological facilities/objects.

BASIC REFERENCES

ORTECH
Designing Agency



ORTECH

I. Warehouses and logistics centres.

The Paints and Lacquers Industry:

1. The **AKZO NOBEL** High Storage Warehouse for paints, lacquers and solvents. The first project of this kind in Poland, with the usable surface area of 12 000 m². The AKZO NOBEL logistic centre for the territory of Poland.
2. The **POLIFARB Cieszyn Wrocław S.A.** Warehouse of Finished Products. With its surface area of 10 000 m², the warehouse was awarded in a nationwide warehouse competition "The construction of The Year"
3. The **ICI POLSKA Sp. z o. o.** Warehouse of Finished Products
4. The project development of **AKZO NOBEL in Pilawa**. Warehouse of Finished Products. The Project devoted to implementation in April 2010. Object implemented.
5. A design of warehouse of packages for **AKZO NOBEL in Pilawa**. The project passed to implement and implemented.

Warehouses for food, pharmaceutical and chemical industries:

1. A High Storage Warehouse for **DELECTA S.A.** - food industry. A two-storey warehouse with a total surface area of 8 000 m².
2. A high storage warehouse for the **POLPHARMA S.A.** Pharmaceutical Company with its surface of 6 000 m².
3. Warehouse of raw materials and packaging for **RIEBER FOODS Polska S.A.** Project located in a conservator-preserved zone - food industry.
4. Nitrate and calcium ammonium nitrate stowage in **ANWIL S.A.** - includes two supply galleries of the product from production departments to packaging room, including an office building with social rooms. The project carried out jointly with Izoprojekt Sp.z o.o. in 2008.
5. Stowage of ammonium nitrate in **ZAKŁADY AZOTOWE PUŁAWY S.A.** A design fully automated packaging system nitrate, coupled with the expansion and modernization of the existing building and the system supplies. Anticipated completion of modernisation: March 2012.

Warehouses for other industries:

1. The warehouse of finished products of **Konin S.A. Aluminium Works**
2. The warehouse of finished Products of **ZPO OPAKOFARB Sp. z o.o.** (metal packaging)
3. The Warehouse of Finished Products for **SUPERFOS Sp. z o.o.** (plastic packaging)
4. The **TOP 2000 Logistic Centre** - a warehouse of paper products. A distribution centre of office supplies. A project with a total surface area of 19 000 m² and a capacity of 20 000 pallet units.
5. **Logistic Centre WAN** in municipality of Zaluski with its surface of 13 000 m². The project submitted to the investor in June 2009.

6. Logistic Centre **LOGISTICS SERVICE S.A.** located in Urzut b/ Warsaw with its surface of 15 000 m² eventually 50 000 m².
7. Air cargo terminal "Cargo 2" at Warsaw Chopin Airport for the **Przedsiębiorstwo Państwowe „PORTY LOTNICZE”**. Project implemented in 2015 and 2018.

II. Industrial plants

1. A design of American Clothing Plant **VF CORP.** (Wrangler, Lee etc.). The office has developed the concept, building design, execution, was a substitute investor, provided the facility to use. The plant employs 1 600 workers.
2. A laboratory design for **DELECTA S.A.** - food industry.
3. A design for the department modernisation of powder production at **Rieber Foods S.A.** - food industry.
4. A design for the departments modernisation of tinned food, flavourings, jellies production at **Rieber Foods S.A.** - food industry.
5. A design for the rasher production hall for **RUN-CHŁODNIA Sp. z o.o.** - food industry.
6. A design for the construction of plastic dyeing and modifying the component production plant - **A. Schulman Polska Sp. z o.o.**
7. A design for the modernisation of ready-to-serve food production at **RUN-CHŁODNIA Sp. z o.o.** - food industry.
8. A design of a meat wholesaler and poultry partition facility for **MAXIM Sp. z o.o.** - food industry.
9. **MEZ-TECHNIK Sp. z o.o.** truck and lift cockpit production plant.
10. A design for a cold store - **MARLEX Sp. z o.o.** A cold store related to freezing and storage of meat and its products.
11. Tin packaging production halls for **ZPO OPAKOFARB**
12. A design of paintings and coats production plant in Pilawa for the British Group **ICI Paints**. Full engineering service including design engineering, supervision and transfer. The plant was put into use in October 2008.
Technological part of the project was developed by Izoprojekt Sp.z o.o.
13. Manufacturing Plant **CENTRUM KLIMA S.A.** in Wieruchowo b/ Warsaw complete industrial facility with area of 9 000 m² including: office building, production hall with a high storage warehouse. The object implemented in 2010.
14. A modernisation design for **POLMOS ŻYRARDÓW S.A.** - a complete multi-branch modernisation - adjustment of production departments 1, 2, 3, 4 to the HACCAP, fire safety, occupational health and safety, and sanitary-epidemiological regulations.
15. A design for a DVD and CD plant for **GM RECORDS**. The plant with full technical infrastructure and road. The project submitted to the investor in 2006
0000016. Analysis of the technical state with the development of guidelines modernization for the chocolates production plant of **CADBURY WEDEL Sp. z o.o.** of Warsaw. Food industry.
17. A laboratory design for **AKZO NOBEL** Group in Wloclawek

18. The plant for the production of plastic components **TENSHO Co. Japan.**

The plant project under the Japanese industrial complex construction - in Łysomice b/ Toruń.

19. Hazardous waste disposal project for **EKO ORLEN** in cooperation with **VEOLIA WATER SYSTEM Sp.z o.o.**

20. Installation of thermal treatment of hazardous waste - construction and architectural part in corporation with **VEOLIA WATER SYSTEM Sp.z o.o.**

21. Installation of dry waste treatment plant for the group in Wloclawek.

22. Adaptation project of an industrial hall for printing - **AGI MEDIA Printer** in Piaseczno with its surface of 6 000 m².

23. A design of the enlargement of manufacturing plant for **CENTRUM KLIMA S.A.** in Wieruchów b/Warsaw. The plant was put into use in a full engineering service in 2010.

24. A design of modernisation of the plant and mixing room **PCV BRUGMANN S.A.** in Wloclawek. The Investment put into use in 2011.

25. A design of rebuild existing production plant into a bakery with total usable area of 18 500 m² for **Piekarnia Nowakowski Elżbieta Zajezierska** in Legionowo. Bakery design of cold store according to BRC standards for food production, developed in the office in all technical fields. Completed in 2013.

26. Project of the **MLEKOVITA 3** milk powder factory in Wysokie Mazowieckie for the "Mlekovita" Dairy Cooperative.

The facility was awarded the first degree prize in the Polish competition "Construction of the Year 2017" of the Polish Association of Construction Engineers and Technicians (PZliTB) in the category of industrial facilities.

27. Design of the **WIKA SGF** measuring equipment production plant for **WIKA Polska sp.z o.o.** SGF sp. K. - a complex comprising 4 production halls, technical buildings and an office building - implemented in 2013-2018.

III. Office buildings

1. The **NOBILES** office building - **AKZONOBEL**.

2. The Management Office building of the PVC Processing Complex at **ANWIL S.A.**

3. **SCHUPBACH-ERG Sp. z o.o.** office building

4. The **MPEC Wloclawek** office building - honourable mention in a competition for the prettiest office building in Wloclawek.

5. The **ORTECH** company headquarters in Wloclawek - PL - full revitalisation of the XIX century city villa which belongs to The National Heritage as "Villa Mansion" and restored under the supervision of conservators.

6. European Centre for Initiatives office building - entered in the register of monuments, renewal of a full modernization of the needs of the Marshal of province.

7. The office building of **ZPO Opakofarb Sp. z o.o.** Honourable mention in a competition for the prettiest office building in Wloclawek.

8. The offices of the sales and marketing departments, and the outpatients clinic at **NOBILES**.

9. The Training Centre office building for **AKZONOBEL** in Pilawa. The building completed in 2011.

10. The **AKZONOBEL** plant's headquarter office building in Pilawa. The building was completed in 2011.

IV. Objects of Commerce

1. **DIY OBI** with a garden in Wloclawek - the office developed the building design, tender design, detailed design, the office served as project supervision and author and obtained permission to use.
2. A design of **DIY OBI** in Miejsce Piastowe b/Krosno Completed in November 2011
3. A design of **DIY OBI** in Piotrkow Trybunalski
4. A design of **DIY OBI** in Cracow. The project completed in 2011.
5. A design of commercial and entertainment gallery with a hotel in Rzeszow with its surface of 100 000 m² in cooperation with **Cushman&Wakefield**. During this project we played the role of controller, technical adviser and project auditor.
6. A design of commercial gallery **NEPTUN** in Starogard Gdanski with its whole surface of 52 000 m². Project was developed in cooperation with **Cushman&Wakefield**.
7. A design of shopping centre **FOCUS PARK** in Wloclawek. The project realized in cooperation with **MOFO Architects** from Cracow. The project put into operation in November 2011.
8. A design of shopping centre **KUJAVIA** in Wloclawek included **DIY Castorama**. The project put into operation in February 2020.

Investor: TOP 2000 PAPER Sp. z o.o.
Date of development: 1999
Usable area: 19 000 m²
Location: Włocławek

Scope of the study:

Building and implementing high-bay warehouse with technical-social office facilities and technical infrastructure. Designed magazine paper products and office supplies distribution centre. The property with a total usable area of 19 000 m² and a capacity of 20 000 units of pallets.

The usable area of storage: 11 670 m²

The usable area of other buildings: approximately 7 330 m²

**LOGISTIC
CENTRE**



Investor: VF Polska Sp. z o.o.
Date of development: 2003, 2007 (expansion)
Usable area: 14 350 m²
Location: Łódź

Scope of the study:

Project for the production of clothing for the world's largest producer of denim. There were sewn products from Lee, Wrangler and others. Scope of the study included the construction project and executive production hall and social office building, pop stores and technical facilities, along with ancillary buildings. Part of office space has been designed for possible expansion, which occurred in 2007.

Usable area of production hall: 10 050 m²

Usable area of office building: 3 650 m²

Usable area of ancillary buildings: 650 m²



**CLOTHING
PRODUCTION
PLANT**

Investor: PPG Deco Polska Sp. z o.o. (former Polifarb Cieszyn-Wroclaw S.A.)
Date of development: 2004, 2013
Usable area: 9 822 m²
Location: Wroclaw

Scope of the study:

Building and implementing high-storage warehouse with mixed construction along with the backup social office, two-storey reception desk and technical infrastructure. In 2013, we made design changes of the storage with the reconstruction of the installation and expansion of the hall.

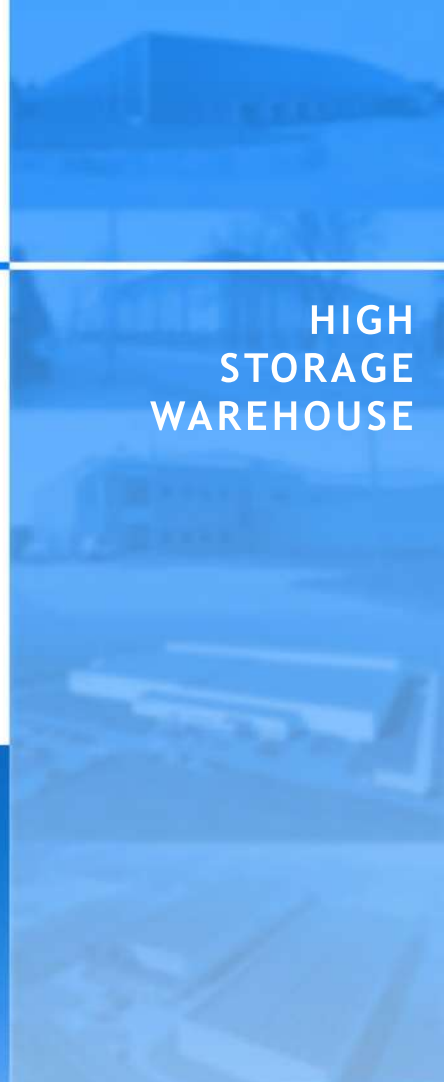
Cubic capacity of storage warehouse: 136 214 m³

Usable storage area: 9 071 m²

Usable area of office building with social facilities part: 560 m²

Usable area of gatehouse: 191 m²

**HIGH
STORAGE
WAREHOUSE**



Investor: Rieber Foods Polska S.A.
Date of development: 2005
Usable area: 4 500 m²
Location: Włocławek

Scope of the study:

The construction design and detailed designs of a high storage warehouse with an underground link to the existing part of the plant. Building was made on the pole construction (mixed steel and concrete) with three-layered brick external walls.

Object of historicizing form is located in historic area of the city in the immediate vicinity of original historic industrial buildings and of Włocławek cathedral.

**HIGH
STORAGE
WAREHOUSE**



Investor: ICI Polska Sp. z o.o. (currently Akzo Nobel Decorative Paints Sp. z o.o.)
Date of development: 2005, 2010 (expansion)
Usable area: 8 120 m²
Location: Pilawa

Scope of the study:

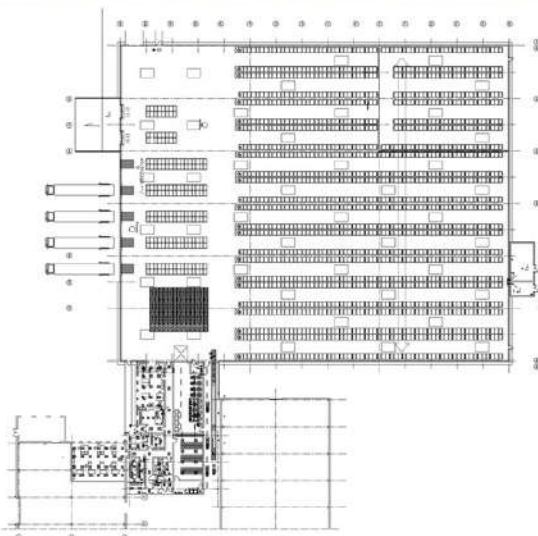
Building and implementing the finished goods warehouse with social service office, together with the necessary technical infrastructure. Designed object, due to the stored material has the highest fire load, designed a fully automatic installation of fire. The building is a single-storey, three-aisled hall of steel combined with existing buildings designed production plant through a linker. In 2010, we designed the expansion of the warehouse.

The area of the storehouse in 2005: 6 100 m²

The area the expansion of the storehouse in 2010: 2 020 m²

**PRODUCTION
PLANT
OF PAINTS
AND VARNISHES**

**HIGH STORAGE
WAREHOUSE
OF FINISHED
PRODUCTS**



ORTTECH

Investor:

GM Records

Date of development:

2006

Usable area:

19 000 m²

Location:

Wola Ducka com. Wiązowna

Scope of the study:

Construction and executive design of production plant - the multimedia complex (press plates CD/DVD), which consists of a three-storey office building connected with the technical and productive buildings, high storage warehouse, roads and manoeuvring yards for freight transport and technical infrastructure.

Usable area of office building: 3 600 m²

Usable area of production hall: 11 500 m²

Usable area of high storage house: 3 900 m²

THE
PRODUCTION
CENTER
OF MULTIMEDIA
PRODUCTS

OFFICE
BUILDING

PRODUCTION
HALLS

HIGH
STORAGE
WAREHOUSE



ORTECH

Investors:

Marshal's Office Kuyavian-Pomeranian province,
BP Ortech

Date of development:

2006-2007

Location:

Włocławek

Scope of projects:

Construction projects and implementing projects of renovation and modernization of buildings listed in the register of monuments, studies also included projects of reconstruction of woodwork, and polychrome. All studies were performed under the supervision of staff restoration.

1. Urban villa of Felix Steinhagen, the owner of one of the largest pulp and paper factory in the early XX century in Poland - so called Włocławek Cellulose. Currently restored palace is the seat of delegacy of Marshal's Office. Project of the restoration was made in 2007.
2. The house of brothers Cassir, the former owners of The Włocławek Cellulose, built in 1899, restored to needs of our office in 2006.

RESTORATIONS OF HISTORIC BUILDINGS



ORTECH

Investor:

ZAKŁADY AZOTOWE ANWIL S.A.

Date of development:

2007

Usable area:

15 243 m²

Location:

Włocławek

Scope of the study:

Construction and working drawings of production packaging, completion building and expedition nitrate fertilizers along with connectors to existing buildings of the plant. Development of the project contained halls packing, forwarding, social office building, connectors for horizontal transport of products incl. site plan and technical infrastructure.

Cubature of the object: 50 532 m³

Usable area of packing and shipping halls: 5 357 m²

Usable area of social office building: 350 m²

CHEMICAL PLANT

PACKING, SHIPPING
FERTILIZERS



ORBTTECH

Investor: TENSHO Poland Corporation
Date of development: 2007
Usable area: 15 243 m²
Location: Ostaszewo near Torun

Scope of the study:

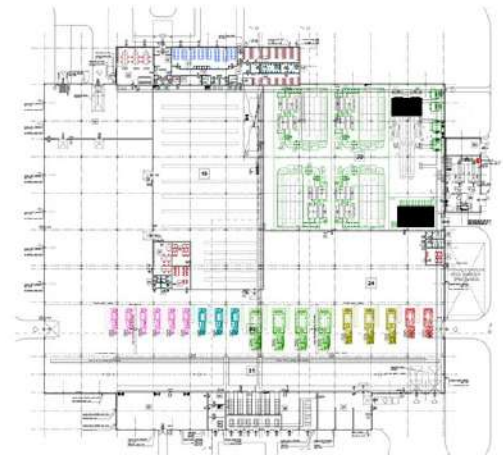
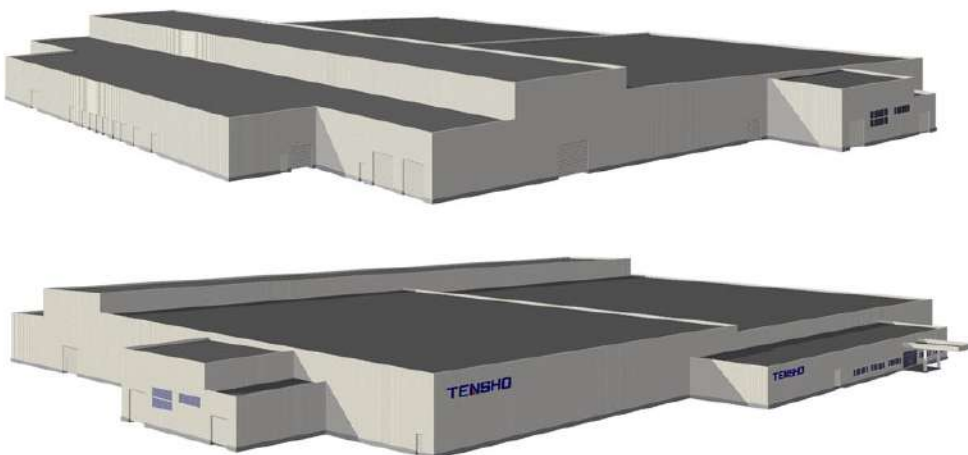
Construction and working drawings of production plant of plastics (manufactured here are, among others, the casing of screens TV's, monitors etc.). Development of the project included production and warehouse hall, office and social building, technical building, HVAC and gatehouse along with roads, squares and manoeuvring and technical infrastructure. In a production and storage hall of reinforced concrete prefabricated, are located five overhead cranes: two with a capacity of 20 tonnes each, the rest of lifting capacity of 1.5 tons.

Usable area of the production and storage hall: 13 160 m²

Usable area of social-office building: 756 m²

Usable area of auxiliary buildings: 1 327 m²

PRODUCTION PLANT OF PLASTICS



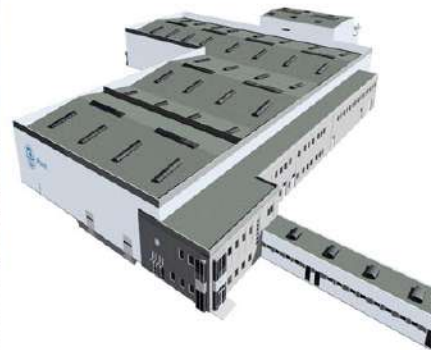
Investor: ICI Polska Sp. z o.o. (currently Akzo Nobel Decorative Paints Sp. z o.o.)
Date of development: 2007, 2011 (expansion)
Usable area: 14 150 m²
Location: Pilawa

Scope of the study:

Design of the complex production of paints and varnishes. The design consisted of constructing and implementing designs of production halls, office and social facilities, connector with the warehouse of finished products, laboratory (1 level building), and a set of tanks for storage of liquids for the manufacture of paints and coatings (building called tank-farm). Designed object due to the production and storage materials have the highest fire load, fully developed automatic fire installation. The complex was planned and implemented with the established reserve land and adapting the structure for future extension, which occurred in 2011, expansion into its scope, warehouse packaging and office building. The complex of area of 9 000 m² increased by 5 150 m².

PRODUCTION
PLANT
OF PAINTS
AND VARNISHES

LABORATORY
OFFICE BUILDING



ORTECH

Investor:

OBI Polska

Date of development:

2007-2013

Usable areas of each DIY supermarket:

about 10 000 m²

Locations:

Włocławek, Piotrków Tryb., Miejsce Piastowe, Cracow

Scope of the study:

Construction and implementing of designs of DIY supermarkets along with office space, site plans and technical infrastructure.

2007 r. - OBI Włocławek

2011 r. - OBI Miejsce Piastowe (b. Krosno)

2012 r. - OBI Piotrków Trybunalski

2013 r. - OBI Cracow

DIY
SUPERMARKETS

OBI



ORTECH

Investor: Brugmann Polska S.A.
Date of development: 2010
Usable area: 1 241 m²
Location: Włocławek

Scope of the study:

Construction and implementing plans of PVC mix room with laboratory, technical, office and social facilities and technical services, reconstruction and extension drawings of steel raw material warehouse hall, gatehouse.

Cubature of mix room: 6 460 m³
Usable area of mix room: 570 m²
Usable area of warehouse: 566 m²
Usable area of gatehouse: 105 m²

PVC MIX ROOM
WAREHOUSE
GATEHOUSE



ORTECH

Investor: Centrum Klima S.A.
Date of development: 2010
Usable area: 10 620 m²
Location: Wieruchów com. Ożarów Maz.

Scope of the study:

The construction design and execution, along with investment supervision of production hall with part of the warehouse, office building with sanitary facilities, technical infrastructure plans and interior design.

Usable area of halls: 8690 m²

Usable area of office building: 1930 m²

**PRODUCTION
PLANT
OF HVAC DEVICES**



ORTECH

Investor: Akzo Nobel Decorative Paints Sp. z o.o.
Date of development: 2010
Usable area: 2200 m²
Location: Pilawa

Scope of the study:

The redevelopment design of the office building with the expansion of the winter garden and the oriels (Input decorative element). The task was to adapt the existing office building from the 60s of the twentieth century to the needs of the training centre.

In the proposed winter garden with a height of two storeys there is a place of rest and informal meetings for training participants and showroom.

**OFFICE BUILDING
TRAINING CENTER**



Investor: MULTI PARK WŁOCŁAWEK Sp. z o.o.
Date of development: 2011
Usable area: 6 466 m²
Location: Włocławek

Scope of the study:

Industry construction and executive drawings and retail and service building (mixed use scheme), car park with 316 parking spaces, technical infrastructure, along with the performance of the author's supervision over the investment.

Architecture design was made by Mofo Architekci MA sp. z o.o. s.k. studio from Cracow.

Volume of the object: 62 100 m³

COMMERCIAL
BUILDING



Investor: Gallery „ NEPTUN” Sp. z o.o. Spółka Komandytowa
Date of development: 2011
Usable area: 49 196 m²
Location: Starogard Gdański

Scope of the study:

Industry construction and implementing drawings of a three-storey building, a shopping mall - shopping mall with underground parking (open), mixed use, cinema (4 rooms each seats 220 people), the recreational and catering area, technical infrastructure and roads. Projects also included reconstruction of local roads.

Architecture Design was made by Company Cushman&Wakefield Poland Sp. Z O.O. (arch. M. Mika-Kosior and team).

Cubature of the object: 281 904 m³

Capacity of the underground garage: 618 cars

COMMERCIAL GALLERY



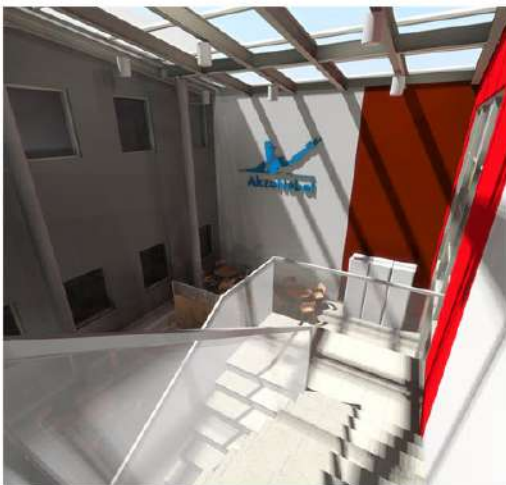
Investor: Akzo Nobel Decorative Paints Sp. z o.o.
Date of development: 2011
Usable area: 2 200 m²
Location: Pilawa

Scope of the study:

The extension of the construction of the paints and varnishes production designed by our office, and completed in 2007. The proposed office building is placed in between the existing three objects projected by us in the years 2007-2010: the existing building office, connector of finished products warehouse with a manufacturing plant and the warehouse.

At the junction with the existing office building was designed two storeys high lobby. By closing the space between existing objects, and the proposed building was created an intimate patio.

**EXPANSION OF
PRODUCTION
PLANT OF PAINTS
AND VARNISHES
OFFICE BUILDING**



ORTECH

Investor:

ZAKŁADY AZOTOWE „PUŁAWY” S.A.

Date of development:

2011

Usable area:

5 870 m²

Location:

Puławy

Scope of the study:

Building and implementing reconstruction and expansion of the packing facilities, nitrate palletizing and shipping, along with the construction design of office part and social space, and the development of technological projects remodelling automated packaging lines as well as broaching the existing railway siding.

Usable area of rebuilt packing room: 5 090 m²

Usable area of extension part: 780 m²

CHEMICAL PLANT

REBUILDING AND
EXPANSION OF
PACKING FACILITIES
AND EXPEDITION



ORBTTECH

Investor: Centrum Klima S.A.
Date of development: 2012
Usable area: 7 550 m²
Location: Wieruchów com. Ożarów Maz.

Scope of the study:

The construction plans and working drawings of production and high storage halls, an office building with sanitary facilities, the project of infrastructure. The proposed facilities are a continuation of building production complex designed by our office in 2010.

Usable area of halls: 6 900 m²

Usable area of office building: 650 m²

**EXPANSION OF
PRODUCTION PLANT
OF HVAC DEVICES**



Investor:

Piekarnia Nowakowski Elżbieta Zajezierska

Date of development:

2012

Usable area:

18 500 m²

Location:

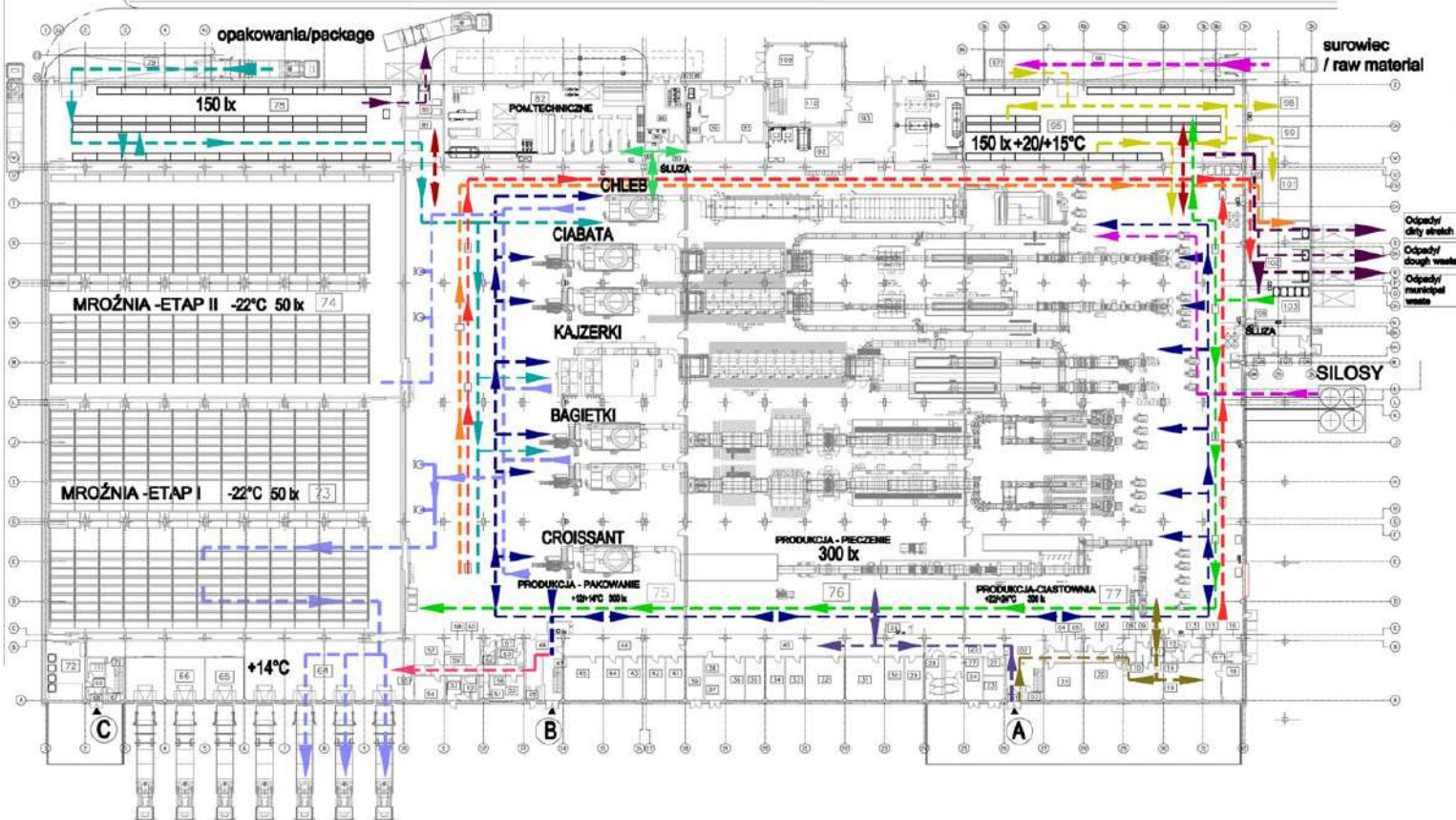
Legionowo

Scope of the study:

Construction design and execution. Development of the project contained refurbishment, changes of the use of an industrial plant, social-office building along with the expansion to the needs of the bakery. Bakery is equipped with seven technological lines for baking different kinds of baked goods including bread, rolls, baguettes, bagels, croissants, ciabatta. Ortech has prepared completed technical documentation including freezers with the area of 3600 m², and another warehousing and distribution facilities. Planned employment in the facility totals 290 people.

Buildings have been designed to meet the applicable requirements of health and safety, fire, health department, British BRC and HACCP standards.

REBUILDING AND EXPANSION OF THE PRODUCTION PLANT TO THE NEEDS OF A NEW BAKERY



ORTECH

Investor: WIKA Polska sp. z o.o. SGF sp. k.
Date of development: 2013
Usable area: 11 440 m²
Location: Włocławek

Scope of the study:

The construction design and execution, supervision and investor oversight. Developing contained plant design with an office building with sanitary facilities, technical building and gatehouse along with roads, squares, manoeuvring and infrastructure technical support. It was also developed technological tunnel design with a length of 110m connecting part of the technical facilities and production. The project took into account the future expansion of the plant.

Usable area of production halls: 7 980 m²
Usable area of social-office building: 2 010 m²
Usable area of auxiliary buildings: 1 450 m²

**PRODUCTION
PLANT OF
MEASURING
DEVICES**



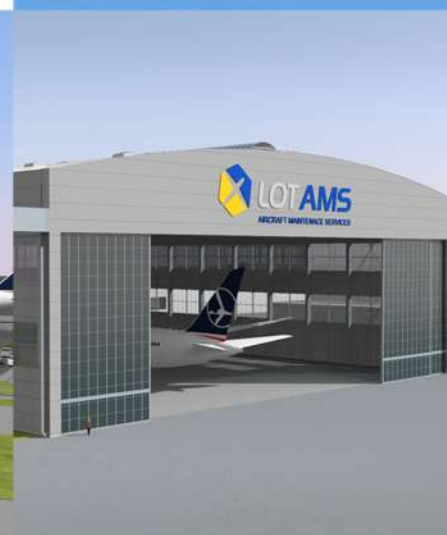
Investor: LOT Aircraft Maintenance Services Sp. z o.o.
Date of development: 2015
Usable area: ca. 10 000 m²
Location: Warsaw

Scope of the study:

Conceptual design (functional and technical) and technical and economic analysis of the construction of hangar No. 5 for servicing the Boeing 787-10 Dreamliner aircraft or several smaller units, along with technical and social-office facilities, hangar panel, new entrance to the airport, car park and technical infrastructure.

Hangar area: 7 600 m²
Area of technical, social and office facilities: 2 400 m²
Hangar panel: 7 000 m²
Other hardened surfaces: 10 100 m²

**HANGAR FOR
AIRCRAFT
MAINTENANCE
Boeing 787-10
Dreamliner**



Investor:

Huta szkła "Czechy" S.A.

Date of development:

2015-2016

Total usable area:

12 000 m²

Location:

Trąbki near Pilawa

Scope of design:

- building permit design, execution design, engineering supervision.

The following objects have been designed: production hall with glass furnace, mould warehouse, ready product warehouse, raw materials warehouse with silos and batch house, daily warehouse, sand warehouse, office building, technical building, compressor building, roads and parking area, technical infrastructure

Designed land development area:

15 500 m²

Total usable area:

12 000 m²

Total cubature of designed objects:

163 900 m³

GLASSWORK



ORTTECH

Investor:
Date of development:
Total usable area:
Location:
General contractor:

Spółdzielnia Mleczarska "Mlekovita"
2015-2017
57 150 m²
Wysokie Mazowieckie
Unibep S.A.

Scope of the study:

Replacement and executive construction design (original construction design by Blezat, BL Polska, Warsaw). The project included HVAC (plumbing, ventilation, air conditioning, heating), electricity, construction, road and architecture; the technological design was developed by GEA. A complex of production buildings was designed, the highest of which is about 38 m high. Milk collection, drying and packaging of milk powders take place in it. The complex is made partly in brick construction, partly in reinforced concrete in a column-slab system reinforced with reinforced concrete walls. Roofs, service platforms and load-bearing technology elements are made of steel.

The completed milk powder production plant is the largest in Central and Eastern Europe. The daily demand for milk is 2 200 000 l

Usable floor area: 57 150 m²
Building area: 16 190 m²
Cubature: 223 760.28 m³

THE FACILITY RECEIVED THE TITLE "CONSTRUCTION OF THE YEAR 2017" (AWARD AND DEGREE) IN THE INDUSTRIAL FACILITIES CATEGORY.

MLEKOVITA 3 MILK POWDER FACTORY



photos from
www.unibep.pl

ORTTECH

Investor: Bravilor Polska Sp. z o.o.
Date of development: 2017 r.
Usable area: 11 650 m²
Location: Białystok
General contractor: Unibep S.A.

Scope of the study:

Conceptual, construction and tender designs of the production plant: a production building with an office, technical, production and warehouse section with technical infrastructure. The factory is equipped with five injection moulding machines of various sizes. The plant will manufacture and assemble drink making equipment, hot water tanks and coffee making equipment. The devices will be partly manufactured from on-site components and components (sub-assemblies) imported from outside the plant.

Usable area of office building: 1 550 m²
Usable area of production building: 11 650 m²
Volume: 118 000 m³

**PRODUCTION
PLANT
FOR
BEVERAGE
PREPARATION
EQUIPMENT**



ORTTECH

Investor:

WIKA Polska sp. z o.o. SGF sp. k.

Date of development:

2017, 2018

Usable area:

ca. 9 000 m²

Location:

Włocławek

Scope of the study:

Construction and executive design, author and investor supervision, organization and carrying out of construction. The project included the expansion of the plant designed by Ortech in 2013.

The planned in 2017 and 2018 expansion included a third and fourth production hall with connectors (including an office and social building) along with roads, maneuvering areas and technical infrastructure.

Our office conducted a tender and conducted and supervised the construction of halls in 2017 and 2019.

The usable area of production halls after the expansion completed in 2019 is over 16,700 m²

PRODUCTION PLANT OF MEASURING DEVICE



Production plant after expansion in 2017.



Production plant after expansion in 2018.

ORTTECH

Investor:

State Enterprise 'Polish Airports'

Date of development:

2018-2019

Usable area:

ca. 4 900 m²

Location:

Warsaw

Scope of the study

Conceptual, construction, tender and executive design of a cargo terminal building with technical infrastructure.

The facility is a complex of the main terminal hall and the office and social facilities building.

The office and social part was designed as a brick, in a mullion-transom structure with prefabricated ceilings; terminal part in steel structure. The building was completed in November 2019.

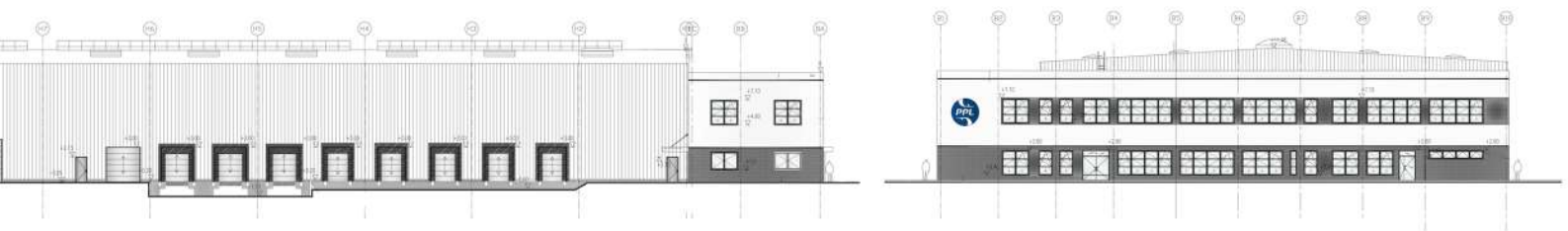
Area:

ca. 4 900 m²

Cubature:

ca. 46 200 m³

CARGO TERMINAL *Cargo 2*



ORTECH

Investor: Omega Investmens Sp. z o.o.
Date of development: 2018 r.
Usable are: ca. 17 600 m²
Location: Włocławek

SHOPPING CENTER PARK KUJAWIA

Scope of the study:

Construction project for the development of the shopping center with technical infrastructure.
Construction project of the main building of the center - a complex of shopping center (retail park) and DIY supermarket (Castorama).

The center was opened in February 2020.

Usable area: ca. 17 600 m²
Cubature: ca. 118 000 m³
Area of development: ca. 89 500 m²



Photo source MIRBUD S.A.

ORTTECH

Investor: PIT-RADWAR S.A.
Date of development: 2022
Total usable area: 10 000 m²
Location: Kobyłka

Project scope:

Conceptual, construction and executive design of the production and assembly building with an office and social part, technical facilities, a shed, internal roads, car parks (approx. 160 parking spaces), along with the necessary technical infrastructure, as part of the expansion of the existing production plant.

PIT-RADWAR S.A. is one of the leading suppliers of professional electronic equipment for the Armed Forces of the Republic of Poland.

Building area: ca. 11 400 m²
Cubature: ca. 102 000 m³

**PRODUCTION
AND ASSEMBLY
BUILDING**

**INDUSTRY OF
PROFESSIONAL
MILITARY
ELECTRONIC
DEVICES**



ORTECH

Investor:

FLOKK SP. Z O.O.

Date of development:

2022

Total usable area:

11 500 m²

Location:

Turek

The scope of the project:

Concept, construction, tender and executive design of a furniture production plant with technical infrastructure. The plant contains of a production and warehouse hall with social facilities.

Building area:

ca. 11 500 m²

Cubature:

ca. 126 000 m³

PRODUCTION
AND
WAREHOUSE
BUILDING

FURNITURE
INDUSTRY



ORTECH

Investor: TERMO ORGANIKA SP. Z O.O.
Date of development: 2023
Usable area: 11 800 m²

The scope of the project:

Concept, construction and tender design of a polystyrene production plant with technical infrastructure. The plant consists of a production and warehouse hall with social facilities and an office building.

Termo Organika is Poland's largest manufacturer of expanded polystyrene boards.

Building area: ca. 11 900 m²
Total usable area ca. 11 800 m²
Cubature: ca. 141 400 m³

**PRODUCTION
PLANT**

**PRODUCTION OF
EXPANDED
POLYSTYRENE
BOARDS**

